

SUNDRE BARLEY DRIVING TOUR



Sundre Barley is an exciting new barley being distributed across Canada and potentially, around the world, from Sundre, Alberta in a new and unique way. 2008 is the first year seed was available to farmers and it is performing for them as it has for several years in trials and at research centers. I thought people might like to see a few of the very first commercial fields of Sundre grown by several different Sundre area farmers under many different conditions, so I've constructed a Self Guided Driving Tour of 20 fields including many Points of Interest along the way. I tried to construct the tour along unique and well marked roads towards the western fringe of the grain belt making it as scenic and enjoyable as possible.

As you look at the fields, one common trait will be the large heads and the smooth awns. For non farmers, awns are the long beards extending up from the kernels. Lightly wrap your hand around the head and pull it upward. The awns will feel silky smooth therefore smooth awns. With a rough awned barley you'll feel tiny little barbs and the awns will feel rough.



As you are looking at the fields, please use respect as this is private property and these fields are the farmers' income for the next year. Most fields have an entrance way, or oil lease road or roads on two sides that will allow you good access along the edges.

Sundre was named after the Town of Sundre. A tradition of the Lacombe Research Centre is to name conventional strawed barleys after Alberta places or towns and semi dwarf barleys after Cree words. The reason for this is that if the genetics are to be patented or protected using Plant Breeders Rights (PBR) the name must be registered in a central registry in England and cannot have been previously used for any kind of crop anywhere in the world. Therefore naming a new variety isn't that easy, but Alberta place names or Cree words should be unique to Alberta and probably never used before. I had submitted several other names for this variety but luckily they could not be used. I feel Sundre is the best possible choice, as Sundre barley is well suited to this area, is a beautiful barley like the town and is being distributed around the world from Sundre.

No other cereal crop that I know of is distributed from the town it was named after.

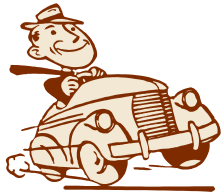
This package includes:

- ✦ ***A written course guide and map***
- ✦ ***A Crop Information Sheet containing a brief description of the farming practices used for each field,***
- ✦ ***Points of interest along the way***
- ✦ ***A one page promotional brochure for Sundre Barley.***

Note: Extra Tour Packages can be downloaded from www.mastinseeds.com



DRIVING TOUR COURSE GUIDE

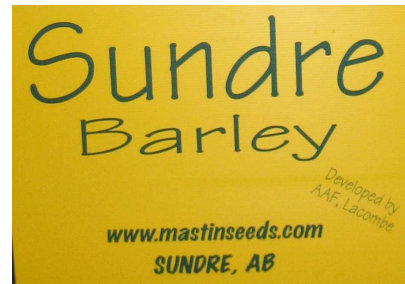


The tour can be started at any point, and travelled in either direction by reversing the course instructions, which were written for traveling in a clockwise loop

It can also be broken down into segments. For example, if you often travel between Olds and Sundre, take an extra 20 minutes one day and do this segment.

For the Sundre Barley Driving Tour, I will list distances in both kilometers and miles as most vehicles are in kilometers and the country roads and rural land are surveyed in miles.

** All fields will be marked with bright yellow field signs.



Starting from Olds ...

From the last traffic lights on the west side of Olds, travel west on Highway #27 for 8 km (5 miles) and turn south on Range Road (R.R.) 3.0. Careful -- the turn south on to RR 3.0 is only 100 meters past RR 2.5 and is a gravel road angling to the south west. This is at the crest of a hill, as the highway drops into Rice's Coulee.

Follow this small scenic winding road for approximately 5.3 km or 3.3 miles. This should take you about 1 km past the intersection of Township (TWP) Road 32.4. The first of Petersen's Sundre fields is on the east side. The second field is only 1 ½ km further south on the east side as well. Both fields have a slight amount of volunteer wheat from last year's crop.

For crop information, please see the enclosed [Crop Information Sheet](#) or read the information on the back of the field signs.

Continue south to TWP Rd 32.2, turn west and you'll soon come to Larry Finnigan's Sundre Barley field number 3 on the south side.

Continue west past the Westerdale Hall and Ball Diamond to Hwy 766 (If you have time, a pretty little side trip would be to continue west on the small gravel road for about 1 mile coming to an old crossing of the Dog Pound Creek).

From Hwy 766, go 2 miles (3.2 km) south and turn west onto TWP Rd 32.0, also known as the Bergen Road, then proceed 2.7 km or 1 ½ miles west. Bill Wigley's field number 4 starts on the north side with the sign at 3.1 km. To view an even better field of Bill's, turn north on RR 3.4 for a few hundred meters and he has a small field to the north of his driveway on the east side of RR 3.4.



2 km or 1 ¼ miles further west along the Bergen Road is an unmarked Sundre field on the south side. It wasn't sprayed for wild oats and probably should have been. Continue west past RR 4.0 and the Zella Hall. Approximately 1/2 mile or 1km further west, there will be Duane Grace's field #5 on the north side and directly to the south, his field #6 with signage and a better viewing location a little further west.

For a side trip to Kernels Corn Maze, turn north on RR 4.2 and go 2 miles or 3.2 km to TWP Rd 32.2, turn east and within a few hundred meters you'll be there.

Return to the Bergen road and continue west past Hwy 22 for one mile (1.6 km), turn north on to RR 4.4, also known as the Westward Ho Road. Continuing north for about 2.9 km (1 ¾ miles) will put you at the sign for Duane's field #7 on the west side followed shortly by field #8.

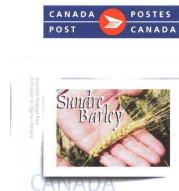
Continue north and in about 4.5 to 5 km you will be at the entrance to Westward Ho Park - a great spot for a picnic or a swim in the Little Red Deer River on a hot day.

Go north to Hwy 27. If you need to make a pit stop or get some refreshments, the Little Red Deer Store is less than 1 km to the east.

To continue the tour, go west on Hwy 27 to the town of Sundre where Sundre Barley legal tender postage stamps can be purchased at the 4-Way Dollar Store one half block north of the traffic lights or at Pharmasave 3 blocks west of the lights.

Sundre Barley Stamp History

Two years ago I draped a large Sundre Barley head over my hand to show how large it was. I've used this picture in my promotional brochures, and the Canadian Wheat Board used it in this year's calendar, which told me it was a good shot, so I cropped it down to the main image only and turned it into a postage stamp, which several businesses in Sundre are using.



While in Sundre stop at the tourist information booth, located east of the bridge near the Shell Service Station, to get some ideas of what you might like to see and do while in Sundre, or to buy Sundre Barley stamps.

Starting from Sundre....

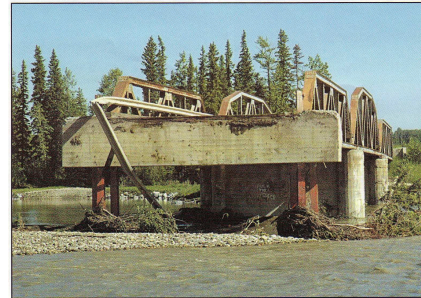


You can reverse the previous directions and go from Sundre to Olds, or from Sundre, travel north from the traffic lights towards James River on the old Hwy #22 (RR 5.3) for about 8.5 km or 5.5 miles and look for 2 marked fields on the east side. Mike Mallinson actually has 3 small fields along the road with the middle one unmarked. These are fields #9, 10 and 11.

As a point of interest, immediately north of these fields is TWP Rd 34.00. An unmarked hail damaged Sundre field is the first barley field on the north side, but for the main point of interest, if you follow this road east it will take you to the Red Deer River and the site of Derby Town which, 100 years ago, was rivaling Sundre. It was the site of the first bridge to cross the upper Red Deer River and when this bridge was washed out in a major flood in 1915, it wasn't replaced. Between this and the death of Derby Town's main promoter in World War I, the town quickly disappeared. I'll warn you, there is absolutely nothing to see! This fact is amazing in itself to note how quickly a town can disappear and be forgotten!

Continue north on RR 5.3 and as you drop down into the James River Valley, note the construction of the new Community Hall to the west. The old hall was destroyed in the severe flooding of 2005, which had also completely taken out the road you are driving on.

This picture shows the south end of the bridge you're about to cross. Just past the bridge is a nice little campground on the east side.



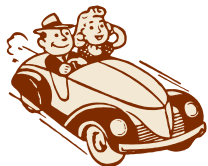
Continue north another 2 km or 1 mile to the James River store and the intersection with Hwy 587.

If you have time, stop for a snack or gas -- there aren't many of these country stores left. The store still functions as the local post office and has its own postal code.

Travel east on Hwy 587 for 11.25 km or 7 miles. Just after you cross the Garrington Bridge watch for RR 4.3 going south. Following this road will take you past my farm and my 50% hail-damaged CDC Meadow Pea and AC Mustang plots.

Travel south on this road for a total of 7.4 km or 4.6 miles, which will take you past Cottrell's Sundre field (#12) marked on the west side and bring you to TWP Rd 34.

Cottrells actually have three fields on this quarter section with the best fields in the back. From 100 meters north of the field sign, if you look west you will see a very nice Sundre field in the distance and to the north of it, my Jasper seed oat field.



As you approach TWP Rd 34 don't follow the curve west, continue straight south to the "T" Intersection and turn east as if going to the Eagle Hill Co-Op. Go east for 1.6 km (1 mile) and turn north on RR 4.2. Three of my seed fields are along the east side of the road.

The first field was broadcast seeded late on June 5th because of wet conditions. The east end of the field which is signed and can be accessed along the oil lease road was seeded one week earlier with an air drill as were the next two fields and there is quite a difference. To get to the third field, you'll need to go to the end of the road, past the horse stables and down through the steep little coulee.



Return to TWP Rd 34 and continue east for 2 miles which will bring you to the Eagle Hill Co-Op and past 2 more of my seed fields, which will be fields 16 & 17 of the tour. These were both broadcast seeded June 5th because of wet conditions.

If you have time or need to make a pit stop, check out the Eagle Hill Co-Op, a very well stocked rural store and farm supply centre. Just east of the store there is a large rock with a plaque giving a brief history of the area.

From the Co-Op store, travel north on RR 4.0 for 6.5 km (4 miles) which will bring you back to Hwy 587. If you have time, Pearsons Berry Farm is 2 km straight ahead on RR 4.0. The Barley Tour turns east on Hwy 587 for about 22.5 km (14 miles).



About 2.5 km east of RR 4.0 on Hwy 587 you will pass the Garrington Church on the north side. A few miles further east watch for RR 3.1. Just before RR 3.1 on the south side of Hwy 587 you will see an acreage. This is the abandoned site of Whitecreek, which at one time boasted a store, post office, curling rink, and skating arena that I can remember.

Just 1 km east of Whitecreek on the north side is the White Creek Gift Shop, owned and operated by the Hengstlers. Just a few minutes further east, watch for the Red Lodge Provincial Park on the north side just east of the Little Red Deer River, a very beautiful park. A few more minutes down the road will bring you to the turn off for the Red Lodge Outfitters & Guest Ranch.

Continuing east on Hwy 587, look for the bright yellow Sundre field signs on the north side and field #18 on the tour.

This again, is one of my late-seeded, pedigreed seed fields.



Just east of this field, on the south side of the road, is Vitality Crystals, which deserves a look. Just ½ km east of here is RR 1.4 and signs for the Bowden Sun Maze. Turn north here and if you have time, stop at the Maze, otherwise continue on to TWP Rd 35.00. Go east 1 mile and you will see Anderson's beautiful Sundre field (#19) on the south side with excellent access from RR 1.3. To view another of Anderson's fields, back track down TWP Rd 35.00 to RR 1.4 and travel north 3.25 km, or 2 miles, to TWP Rd 35.2, also known as the Cottonwood Road. Field #20 is ahead and to the left with excellent access from the Cottonwood Road via a reclaimed oil lease.

This concludes the tour showcasing a few of the many fields in the area. Without knowing it, you will have driven by several fields intended for silage and many others that were very close but inaccessible. I didn't mention the silage fields as most will be harvested before you can drive the tour. If you are interested, I will post the tonnage results (which should be excellent) from the fields on my website at www.mastinseeds.com.

Thank you for taking the time to drive the Sundre Barley Field tour.



You can access the Queen Elizabeth II Highway (Highway #2) at the new overpass on the south side of Innisfail by traveling east on the Cottonwood Road; or travel west 11 km or 7 miles to RR 2.5 and the site of the old Cottonwood Store (northwest quadrant of this intersection). A little further west is the Cottonwood Gordon Hall, and a little further yet brings you to a boat launch and picnic area on the south shore of Glennifer Lake.



Another 2 miles (3.2 km) will give you a good view of a big hill known as Moose Mountain, which used to have a popular dance hall at the very top, built by a colorful remittance man. At this point, turn south for 4 miles or 6.4 km and you are back to Hwy 587, a little east of the Garrington Church.

From field #20, you could trail north 3.2 km or 2 miles to the Little Red Deer Road which, if you follow it east, will take you into Innisfail near the golf course; or travel west to the main recreation areas of Glennifer Lake.

A jog north onto RR 2.2 will take you across Dickson Dam.

This should get you to where you might want to go, and again, thank you for driving the tour.

I hope you enjoyed your trip!

Bob Mastin
Mastin Seeds



To Start from Innisfail....

From the new south overpass, take the Cottonwood Road west to RR 1.4. Field #20 will be in front of you and to your right. Following the maps and written instructions in reverse will take you on a counter clockwise tour.

To Start from Bowden....

Head west on Hwy 587 to RR 1.3 and turn north, in about 2.5 to 3 km you will see the Sundre signs for Field #19. Head west on TWP Rd 35 to RR 1.4 and go north 3.2 km or 2 miles and Field #20 is ahead to your left, with excellent access from the Cottonwood Road via a reclaimed oil lease.

Edgar Farms Market Gardens field is on the south side of the Cottonwood Road. Their main operation and retail store is only 1 km west.

To continue the tour in reverse, travel south on RR 1.4 past the Bowden Sun Maze to Hwy 587 and head west following the map and instructions in reverse.
Have fun!!